

SHEET SCHEDULE

- 1.1 PROJECT LOCATION AND SITE ACCESS
- 1.2 DEMOLITION AND PROTECTION PLAN
- 1.3 EQUIPMENT LAYOUT PLAN
- 1.4 SITE PLAN
- 1.5 GRADING AND EROSION CONTROL PLAN
- 1.6 DESIGN COMPUTATIONS
- 1.7 DETAILS - WALL AND SURFACING
- 1.8 POURED-IN-PLACE PLAYGROUND SURFACING WITH UNDERDRAIN
- 1.9 ORNAMENTAL FENCE

City of Madison
 Department of Public Works
PARKS DIVISION

City-County Building, Suite 104
 210 Martin Luther King, Jr. Blvd.
 Madison, WI 53703

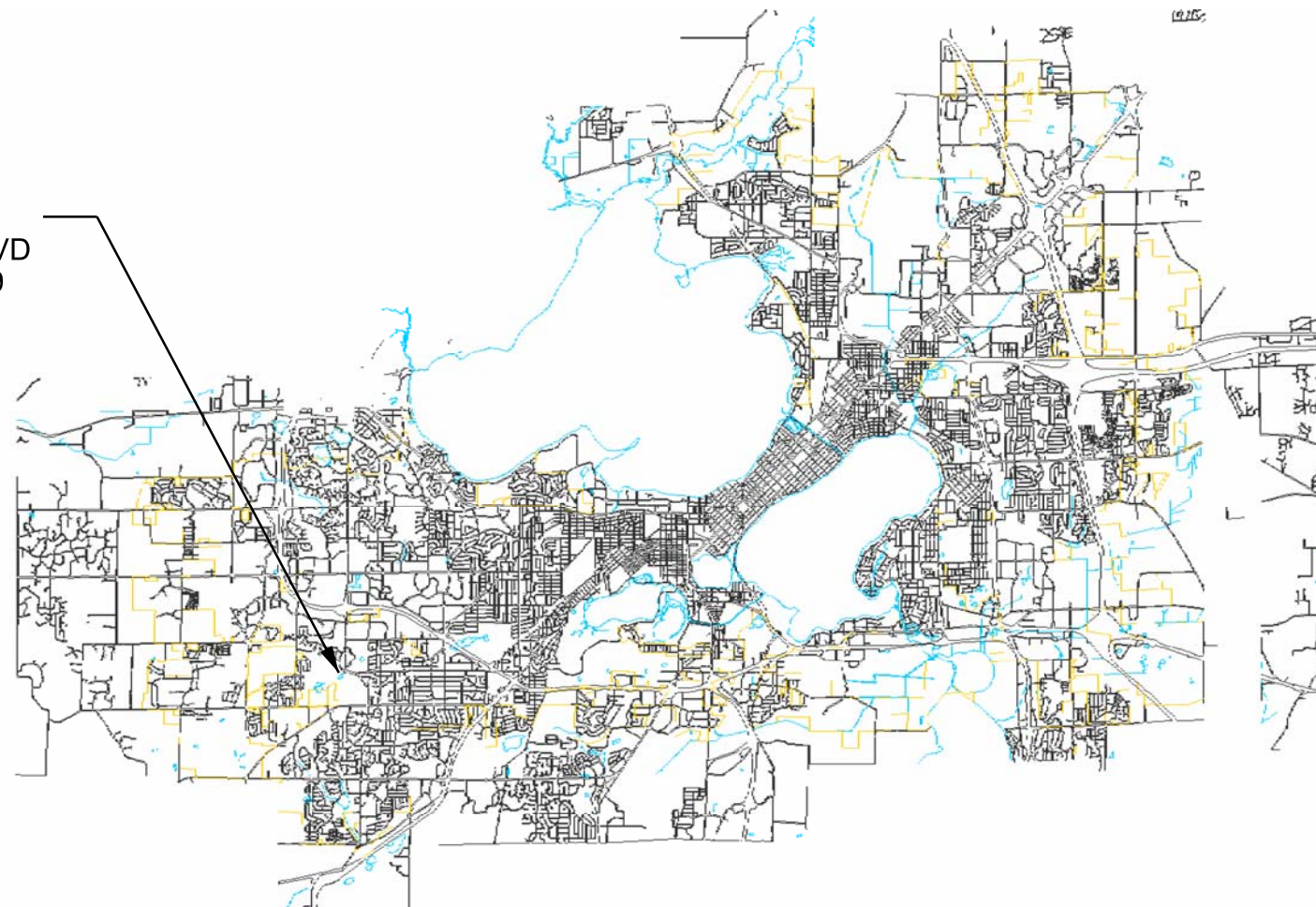


2018 ELVER PARK INCLUSIVE PLAYGROUND
CONTRACT 8228
MUNIS NO. 17366-51-130

PROJECT:

*2018 ELVER
 PARK INCLUSIVE
 PLAYGROUND*

ELVER PARK
 1250 MCKENNA BLVD
 MADISON, WI 53719



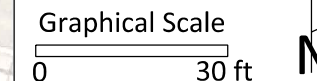
Although every effort has been made in preparing these plans and checking them for accuracy, the contractor and subcontractors must check all details and dimensions of their trade and be responsible for the same.

ITEM	DATE
Advertised by: KK	06-14-2018

PUBLIC WORKS PROJECT #:
8228

SHEET TITLE:

SHEET NUMBER:



PROJECT:
**2018 ELVER
 PARK
 INCLUSIVE
 PLAYGROUND**

**ELVER PARK
 1250 MCKENNA BLVD
 MADISON, WI 53719**

Although every effort has been made in preparing these plans and checking them for accuracy, the contractor and subcontractors must check all details and dimensions of their trade and be responsible for the same.

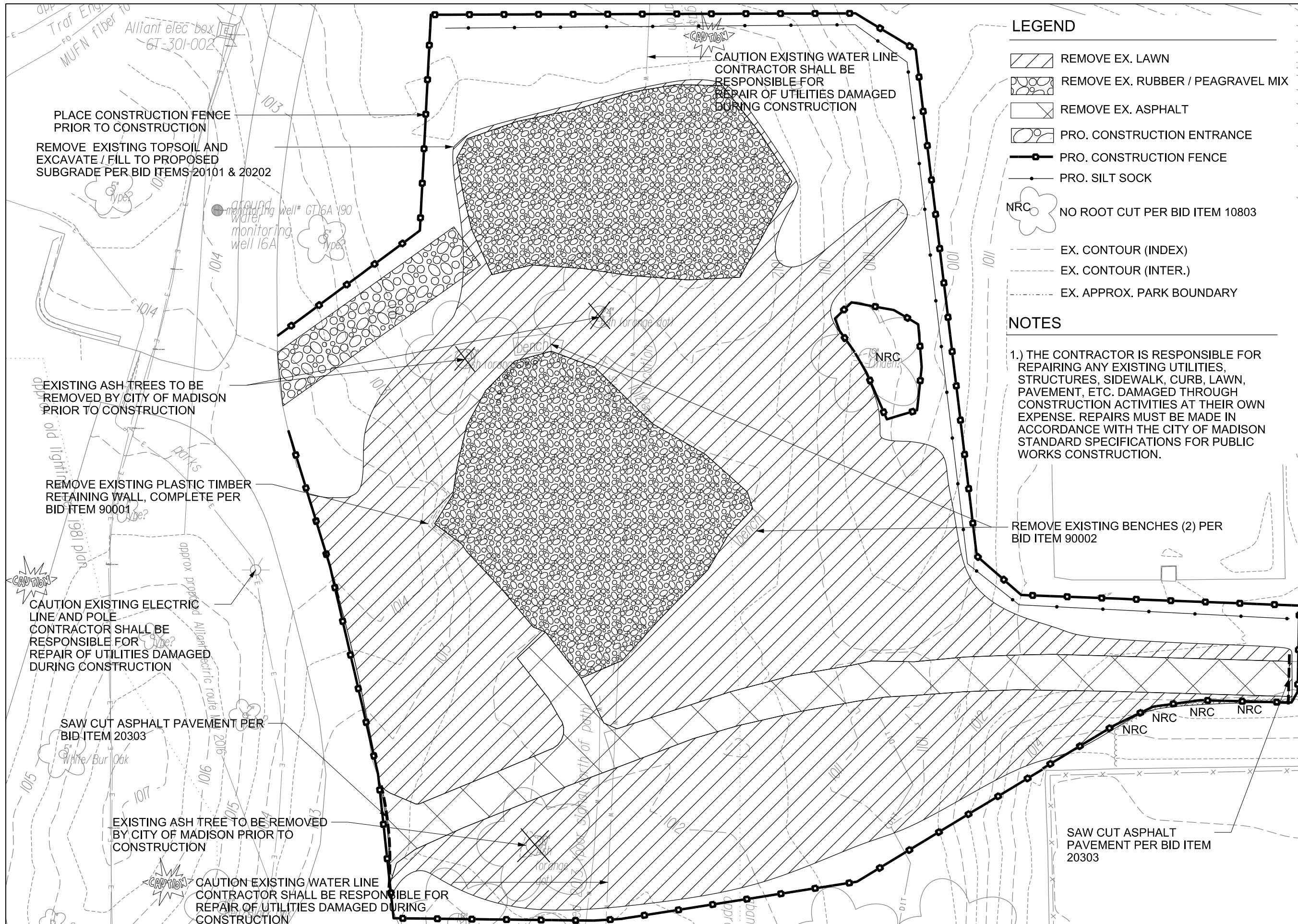
ITEM	DATE
Drawn by: KK	05-10-2018
Approved by:	xx-xx-xxxx

PUBLIC WORKS PROJECT #:
8228

SHEET TITLE:
**PROJECT LOCATION
 AND SITE ACCESS**

SHEET NUMBER:
1.1





LEGEND

- REMOVE EX. LAWN
- REMOVE EX. RUBBER / PEAGRAVEL MIX
- REMOVE EX. ASPHALT
- PRO. CONSTRUCTION ENTRANCE
- PRO. CONSTRUCTION FENCE
- PRO. SILT SOCK
- NRC NO ROOT CUT PER BID ITEM 10803
- EX. CONTOUR (INDEX)
- EX. CONTOUR (INTER.)
- EX. APPROX. PARK BOUNDARY

NOTES

1.) THE CONTRACTOR IS RESPONSIBLE FOR REPAIRING ANY EXISTING UTILITIES, STRUCTURES, SIDEWALK, CURB, LAWN, PAVEMENT, ETC. DAMAGED THROUGH CONSTRUCTION ACTIVITIES AT THEIR OWN EXPENSE. REPAIRS MUST BE MADE IN ACCORDANCE WITH THE CITY OF MADISON STANDARD SPECIFICATIONS FOR PUBLIC WORKS CONSTRUCTION.

REMOVE EXISTING BENCHES (2) PER BID ITEM 90002

City of Madison
Department of Public Works
PARKS DIVISION

City-County Building, Suite 104
210 Martin Luther King, Jr. Blvd.
Madison, WI 53703

play
MADISON
PARKS

Graphical Scale

0 20 ft



PROJECT:

ELVER PARK
INCLUSIVE
PLAYGROUND

ELVER PARK
1250 MCKENNA BLVD
MADISON, WI 53719

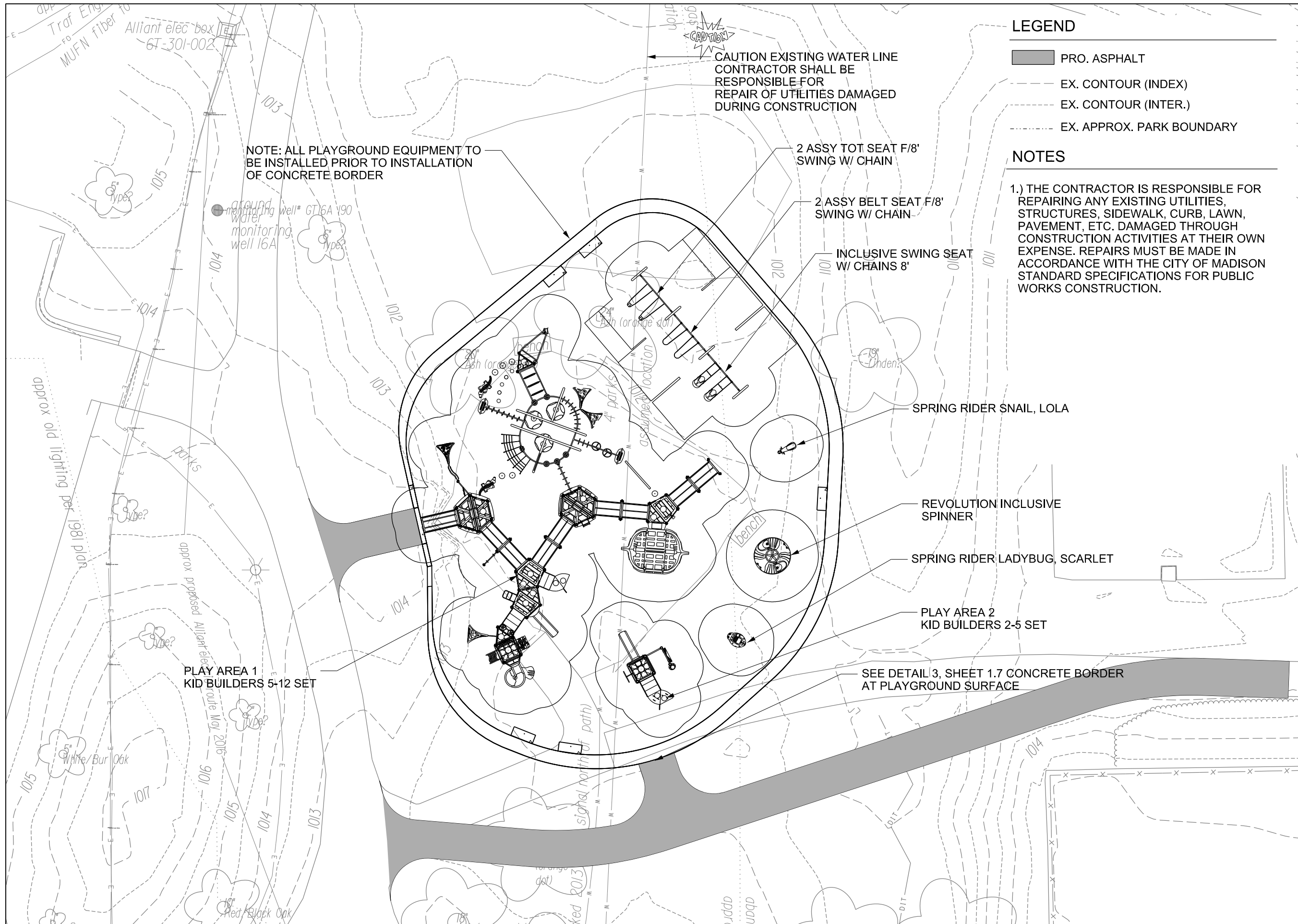
Although every effort has been made in preparing these plans and checking them for accuracy, the contractor and subcontractors must check all details and dimensions of their trade and be responsible for the same.

ITEM	DATE
Drawn by: KK	05-10-2018
Approved by:	xx-xx-xxxx

PUBLIC WORKS PROJECT #:
8228

SHEET TITLE:
DEMOLITION AND PROTECTION PLAN

SHEET NUMBER:
1.2



LEGEND

- PRO. ASPHALT
- - - EX. CONTOUR (INDEX)
- - - EX. CONTOUR (INTER.)
- - - EX. APPROX. PARK BOUNDARY

NOTES

1.) THE CONTRACTOR IS RESPONSIBLE FOR REPAIRING ANY EXISTING UTILITIES, STRUCTURES, SIDEWALK, CURB, LAWN, PAVEMENT, ETC. DAMAGED THROUGH CONSTRUCTION ACTIVITIES AT THEIR OWN EXPENSE. REPAIRS MUST BE MADE IN ACCORDANCE WITH THE CITY OF MADISON STANDARD SPECIFICATIONS FOR PUBLIC WORKS CONSTRUCTION.

NOTE: ALL PLAYGROUND EQUIPMENT TO BE INSTALLED PRIOR TO INSTALLATION OF CONCRETE BORDER

CAUTION EXISTING WATER LINE CONTRACTOR SHALL BE RESPONSIBLE FOR REPAIR OF UTILITIES DAMAGED DURING CONSTRUCTION

2 ASSY TOT SEAT F/8' SWING W/ CHAIN

2 ASSY BELT SEAT F/8' SWING W/ CHAIN

INCLUSIVE SWING SEAT W/ CHAINS 8'

SPRING RIDER SNAIL, LOLA

REVOLUTION INCLUSIVE SPINNER

SPRING RIDER LADYBUG, SCARLET

PLAY AREA 2 KID BUILDERS 2-5 SET

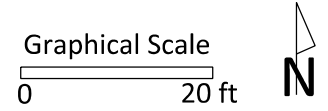
SEE DETAIL 3, SHEET 1.7 CONCRETE BORDER AT PLAYGROUND SURFACE

PLAY AREA 1 KID BUILDERS 5-12 SET

City of Madison
Department of Public Works
PARKS DIVISION

City-County Building, Suite 104
210 Martin Luther King, Jr. Blvd.
Madison, WI 53703

play
MADISON PARKS



PROJECT:
**ELVER PARK
INCLUSIVE
PLAYGROUND**

**ELVER PARK
1250 MCKENNA BLVD
MADISON, WI 53719**

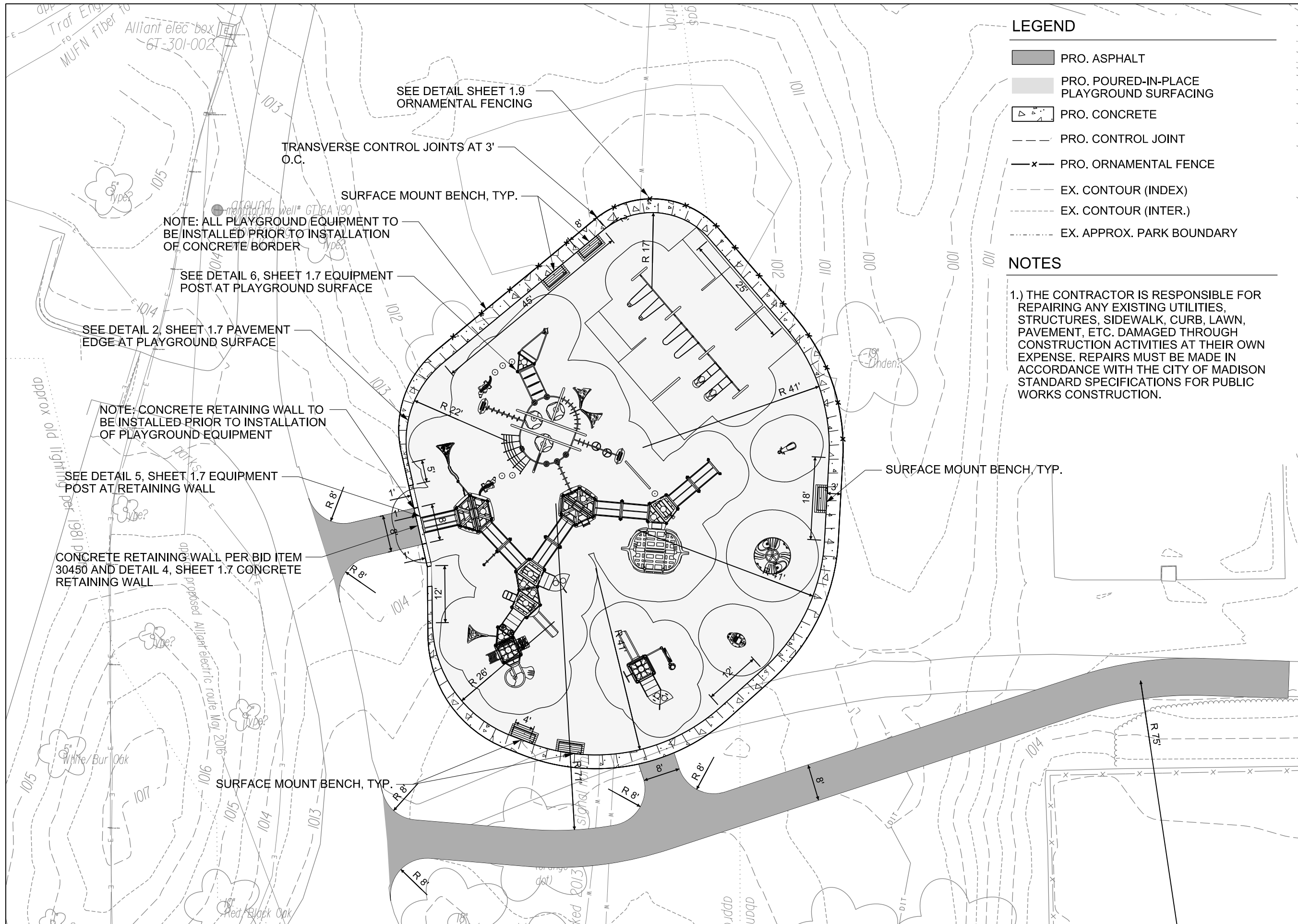
Although every effort has been made in preparing these plans and checking them for accuracy, the contractor and subcontractors must check all details and dimensions of their trade and be responsible for the same.

ITEM	DATE
Drawn by: KK	06-14-2018
Approved by:	xx-xx-xxxx

PUBLIC WORKS PROJECT #:
8228

SHEET TITLE:
SITE PLAN

SHEET NUMBER:
1.3



LEGEND

- PRO. ASPHALT
- PRO. POURED-IN-PLACE PLAYGROUND SURFACING
- PRO. CONCRETE
- PRO. CONTROL JOINT
- PRO. ORNAMENTAL FENCE
- EX. CONTOUR (INDEX)
- EX. CONTOUR (INTER.)
- EX. APPROX. PARK BOUNDARY

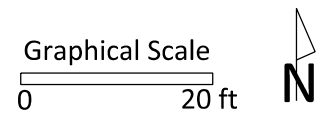
NOTES

1.) THE CONTRACTOR IS RESPONSIBLE FOR REPAIRING ANY EXISTING UTILITIES, STRUCTURES, SIDEWALK, CURB, LAWN, PAVEMENT, ETC. DAMAGED THROUGH CONSTRUCTION ACTIVITIES AT THEIR OWN EXPENSE. REPAIRS MUST BE MADE IN ACCORDANCE WITH THE CITY OF MADISON STANDARD SPECIFICATIONS FOR PUBLIC WORKS CONSTRUCTION.

City of Madison
 Department of Public Works
PARKS DIVISION

City-County Building, Suite 104
 210 Martin Luther King, Jr. Blvd.
 Madison, WI 53703

play
MADISON
PARKS



PROJECT:
ELVER PARK
INCLUSIVE
PLAYGROUND

ELVER PARK
1250 MCKENNA BLVD
MADISON, WI 53719

Although every effort has been made in preparing these plans and checking them for accuracy, the contractor and subcontractors must check all details and dimensions of their trade and be responsible for the same.

ITEM	DATE
Drawn by: KK	06-14-2018
Approved by:	xx-xx-xxxx

PUBLIC WORKS PROJECT #:
8228

SHEET TITLE:
SITE LAYOUT PLAN

SHEET NUMBER:
1.4

CONCRETE EDGE AT PLAYGROUND SURFACE: 1012.03
 ELEVATION OF FINISHED PLAYGROUND SURFACE: 1012.00
 PLAYGROUND SUBGRADE ELEVATION: 1011.33
 S ASPHALT PATH AT PLAYGROUND ELEVATION: 1012.03
 W ASPHALT PATH AT PLAYGROUND ELEVATION: 1014.00

Elver Park Playground		
Drain Tile Invert (Flowline) Elevations		
Point	Invert (ft)	Distance from top of play surface 1012.00 (INCHES)
A	1010.75	15.00
B	1010.51	17.88
C	1010.26	20.88
D	1010.11	22.68
E	1010.75	15.00
F	1010.75	15.00
G	1010.75	15.00
H	1009.50	30.00

Drain Tile Lengths & Slopes from intersection to intersection				
From	To	Length (ft)	Slope (%)	Pipe type
A	B	23.37	-1.03	Underdrain
B	C	25.00	-1.00	Underdrain
C	D	15.00	-1.00	Underdrain
D	H	60.59	-1.01	Underdrain
E	B	42.21	-0.57	Underdrain
F	C	42.20	-1.16	Underdrain
G	D	32.44	-1.97	Underdrain

CAUTION EXISTING WATER LINE CONTRACTOR SHALL BE RESPONSIBLE FOR REPAIR OF UTILITIES DAMAGED DURING CONSTRUCTION

CAUTION EXISTING ELECTRIC LINE AND POLE CONTRACTOR SHALL BE RESPONSIBLE FOR REPAIR OF UTILITIES DAMAGED DURING CONSTRUCTION

CAUTION EXISTING WATER LINE CONTRACTOR SHALL BE RESPONSIBLE FOR REPAIR OF UTILITIES DAMAGED DURING CONSTRUCTION

LEGEND

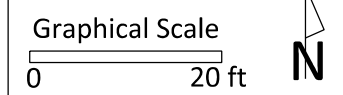
- xxx.xx PRO. SPOT EL.
- PRO. POURED-IN-PLACE PLAYGROUND SURFACING
- PRO. EROSION MATTING
- PRO. CONSTRUCTION ENTRANCE
- PRO. GRADING EXTENTS
- PRO. SWALE
- PRO. STORM PIPE
- PRO. REINFORCED CONCRETE APRON ENDWALL
- PRO. UNDERDRAIN
- PRO. CONSTRUCTION FENCE
- PRO. SILT SOCK
- PRO. CONTOUR (INDEX)
- PRO. CONTOUR (INTER.)
- EX. CONTOUR (INDEX)
- EX. CONTOUR (INTER.)
- EX. APPROX. PARK BOUNDARY

NOTES

- 1.) PLACE 4 OZ. PERMEABLE NON-WOVEN LANDSCAPE FABRIC OVER ENTIRE PLAYGROUND SUBGRADE PER DETAIL 1, SHEET 1.8.
- 2.) PLAYGROUND EQUIPMENT SHALL BE INSTALLED WITH APPROPRIATE ELEVATIONS RELATIVE TO PROPOSED FINISHED SURFACE ELEVATIONS FOR PLAYGROUND SURFACING AS DEFINED IN PLANS.

City of Madison
 Department of Public Works
PARKS DIVISION
 City-County Building, Suite 104
 210 Martin Luther King, Jr. Blvd.
 Madison, WI 53703

play
MADISON PARKS



PROJECT:
ELVER PARK INCLUSIVE PLAYGROUND

ELVER PARK
 1250 MCKENNA BLVD
 MADISON, WI 53719

Although every effort has been made in preparing these plans and checking them for accuracy, the contractor and subcontractors must check all details and dimensions of their trade and be responsible for the same.

ITEM	DATE
Drawn by: KK	05-10-2018
Approved by:	xx-xx-xxxx

PUBLIC WORKS PROJECT #:
8228

SHEET TITLE:
GRADING AND EROSION CONTROL PLAN

SHEET NUMBER:
1.5

Elver Park Accessible Playground - Earthwork Quantities

City of Madison, WI Public Works Contract
Date Revised: 5/8/2018

Notes:
Positive volumes are cuts, negative volumes are fills.
Not all parts of all surface models (Digital Terrain Models) are used for computations or intended for actual construction.

Existing
Proposed Pro1.dtm
Proposed Elver_Survey2017-11-14_Playground.dtm

Grp	Material	Item	From Surface Model	To Surface Model	area (sq ft)	depth (ft)	Unfactored volume (cu ft)	Unfactored volume (cu yd)	Expansion Factor (%)	Factored (Uncompacted) Volume (cu yd)
Asphalt to Asphalt	Asphalt Excavate	Remove estimated 3in asphalt	n/a	n/a	425	0.25	106	3.9	0%	3.9
Asphalt to Asphalt	Gravel (Clean) Excavate	Remove estimated 4in clean gravel base	n/a	n/a	425	0.33	142	5.2	0%	5.2
Asphalt to Asphalt	Gravel (Dirty) Excavate	Remove estimated 2in mixed gravel/subsoil	n/a	n/a	425	0.17	71	2.6	0%	2.6
Asphalt to Asphalt	Subsoil Excavate	Cut subsoil to proposed subgrade	Ex-9in	Pro-12in	425	varies	2932	108.6	0%	108.6
Asphalt to Asphalt	Subsoil Place	Fill subsoil to proposed subgrade	Ex-9in	Pro-12in	425	varies	-2	-0.1	0%	-0.1
Asphalt to Asphalt	Gravel (for Pavement) Place	Place 9in gravel base out to 6in from pavement edge	n/a	n/a	425	-0.75	-319	-11.8	0%	-11.8
Asphalt to Asphalt	Asphalt Place	Place 3in asphalt	n/a	n/a	339	-0.25	-85	-3.1	0%	-3.1
Asphalt to Asphalt	Topsoil Place	Place 3in topsoil over 6in wide gravel edge	n/a	n/a	86	-0.25	-22	-0.8	0%	-0.8
Asphalt to Concrete	Asphalt Excavate	Remove estimated 3in asphalt	n/a	n/a	198	0.25	49	1.8	0%	1.8
Asphalt to Concrete	Gravel (Clean) Excavate	Remove estimated 4in clean gravel base	n/a	n/a	198	0.33	66	2.4	0%	2.4
Asphalt to Concrete	Subsoil Excavate	Cut subsoil to proposed subgrade	Ex-9in	Pro-11in	198	varies	7	0.3	0%	0.3
Asphalt to Concrete	Subsoil Place	Fill subsoil to proposed subgrade	Ex-9in	Pro-11in	198	varies	-10	-0.4	0%	-0.4
Asphalt to Concrete	Gravel (for Pavement) Place	Place 6in gravel base out to 6in from pavement edge	n/a	n/a	198	-0.50	-99	-3.7	0%	-3.7
Asphalt to Concrete	Concrete Place	Place 5in concrete	n/a	n/a	135	-0.42	-56	-2.1	0%	-2.1
Asphalt to Concrete	Topsoil Place	Place 5in topsoil over 6in wide gravel edge	n/a	n/a	64	-0.42	-27	-1.0	0%	-1.0
Asphalt to Grass	Asphalt Excavate	Remove estimated 3in asphalt	n/a	n/a	886	0.25	221	8.2	0%	8.2
Asphalt to Grass	Gravel (Clean) Excavate	Remove estimated 4in clean gravel base	n/a	n/a	886	0.33	295	10.9	0%	10.9
Asphalt to Grass	Gravel (Dirty) Excavate	Remove estimated 2in mixed gravel/subsoil	n/a	n/a	886	0.17	148	5.5	0%	5.5
Asphalt to Grass	Subsoil Excavate	Cut subsoil to proposed subgrade	Ex-9in	Pro-6in	886	varies	41935	1553.1	0%	1553.1
Asphalt to Grass	Subsoil Place	Fill subsoil to proposed subgrade	Ex-9in	Pro-6in	886	varies	-432	-16.0	0%	-16.0
Asphalt to Grass	Topsoil Place	Place 6in topsoil	n/a	n/a	886	-0.50	-443	-16.4	0%	-16.4
Asphalt to Playsurface	Asphalt Excavate	Remove estimated 3in asphalt	n/a	n/a	376	0.25	94	3.5	0%	3.5
Asphalt to Playsurface	Gravel (Clean) Excavate	Remove estimated 4in clean gravel base	n/a	n/a	376	0.33	125	4.6	0%	4.6
Asphalt to Playsurface	Gravel (Dirty) Excavate	Remove estimated 2in mixed gravel/subsoil	n/a	n/a	376	0.17	63	2.3	0%	2.3
Asphalt to Playsurface	Subsoil Excavate	Cut subsoil to proposed subgrade	Ex-9in	Pro-8in	376	varies	0	0.0	0%	0.0
Asphalt to Playsurface	Subsoil Place	Fill subsoil to proposed subgrade	Ex-9in	Pro-8in	376	varies	-87	-3.2	0%	-3.2
Asphalt to Playsurface	Gravel (for Playsurface) Place	Place 4in gravel base	n/a	n/a	376	-0.33	-124	-4.6	0%	-4.6
Asphalt to Playsurface	Playsurface Place	Place 4in PIP playsurface	n/a	n/a	376	-0.33	-125	-4.6	0%	-4.6
Grass to Asphalt	Topsoil Excavate	Strip 6in topsoil	n/a	n/a	1796	0.50	898	33.3	0%	33.3
Grass to Asphalt	Subsoil Excavate	Cut subsoil to proposed subgrade	Ex-6in	Pro-12in	1796	varies	0	0.0	0%	0.0
Grass to Asphalt	Subsoil Place	Fill subsoil to proposed subgrade	Ex-6in	Pro-12in	1796	varies	0	0.0	0%	0.0
Grass to Asphalt	Gravel (Path) Place	Place 9in gravel base, out to 6in from asphalt edge	n/a	n/a	1796	-0.75	-1347	-49.9	0%	-49.9
Grass to Asphalt	Asphalt Place	Place 3in asphalt	n/a	n/a	1526	-0.25	-382	-14.1	0%	-14.1
Grass to Asphalt	Topsoil Place	Place 3in topsoil on 6in wide gravel edge	n/a	n/a	270	-0.25	-68	-2.5	0%	-2.5
Grass to Concrete	Topsoil Excavate	Strip 6in topsoil	n/a	n/a	1426	0.50	712.95	26.4	0%	26.4
Grass to Concrete	Subsoil Excavate	Cut subsoil to proposed subgrade	Ex-6in	Pro-11in	1426	varies	458.76	17.0	0%	17.0
Grass to Concrete	Subsoil Place	Fill subsoil to proposed subgrade	Ex-6in	Pro-11in	1426	varies	-350.35	-13.0	0%	-13.0
Grass to Concrete	Gravel (for concrete edge) Place	Place 6in gravel base out to 6in from pavement edge	n/a	n/a	1426	-0.50	-712.95	-26.4	0%	-26.4
Grass to Concrete	Concrete Place	Place 5in concrete	n/a	n/a	840	-0.42	-350.03	-13.0	0%	-13.0
Grass to Concrete	Topsoil Place	Place 6in topsoil over 6in wide gravel edge	n/a	n/a	586	-0.50	-292.95	-10.9	0%	-10.9

Grass to Grass	Topsoil Excavate	Strip 6in topsoil	n/a	n/a	6460	0.50	3230.04	119.6	0%	119.6
Grass to Grass	Subsoil Excavate	Cut subsoil to proposed subgrade	Ex-6in	Pro-6in	6460	varies	18105.94	670.6	0%	670.6
Grass to Grass	Subsoil Place	Fill subsoil to proposed subgrade	Ex-6in	Pro-6in	6460	varies	-2108.17	-78.1	0%	-78.1
Grass to Grass	Topsoil Place	Place 6in topsoil	n/a	n/a	6460	-0.50	-3230.04	-119.6	0%	-119.6
Grass to Play Surface	Topsoil Excavate	Strip 6in topsoil	n/a	n/a	4394	0.50	2197	81.4	0%	81.4
Grass to Play Surface	Subsoil Excavate	Cut subsoil to proposed subgrade	Ex-6in	Pro-8in	4394	varies	837	31.0	0%	31.0
Grass to Play Surface	Subsoil Place	Fill subsoil to proposed subgrade	Ex-6in	Pro-8in	4394	varies	-478	-17.7	0%	-17.7
Grass to Play Surface	Play Surface Place	Place 4in PIP playsurface and 4" gravel	n/a	n/a	4394	-0.67	-2944	-109.0	0%	-109.0
Grass to Wall	Topsoil Excavate	Strip 6in topsoil	n/a	n/a	42	0.50	20.94	0.8	0%	0.8
Grass to Wall	Subsoil Excavate	Cut subsoil to proposed subgrade	Ex-6in	Pro-11in	42	varies	72.88	2.7	0%	2.7
Grass to Wall	Subsoil Place	Fill subsoil to proposed subgrade	Ex-6in	Pro-11in	42	varies	0.00	0.0	0%	0.0
Grass to Wall	Gravel (for concrete edge) Place	Place 6in gravel base out to 6in from pavement edge	n/a	n/a	42	-0.50	-20.94	-0.8	0%	-0.8
Grass to Wall	Concrete Place	Place 5in concrete	n/a	n/a	24	-0.42	-10.00	-0.4	0%	-0.4
Grass to Wall	Topsoil Place	Place 6in topsoil over 6in wide gravel edge	n/a	n/a	18	-0.50	-8.95	-0.3	0%	-0.3
Play Surface to Concrete	Play Surface Excavate	Remove existing play surface, estimated depth 17in	n/a	n/a	156	1.42	220.92	8.2	0%	8.2
Play Surface to Concrete	Subsoil Place	Cut subsoil to proposed subgrade	Ex-17in	Pro-11in	156	varies	0.00	0.0	0%	0.0
Play Surface to Concrete	Subsoil Excavate	Fill subsoil to proposed subgrade	Ex-17in	Pro-11in	156	varies	-81.25	-2.3	0%	-2.3
Play Surface to Concrete	Concrete Boarder Place (placeholder volume)	Place playground border timbers (placeholder volume to balance volume comps)	n/a	n/a	156	-1.00	-155.58	-5.8	0%	-5.8
Play Surface to Grass	Play Surface Excavate	Remove existing play surface, estimated depth 17in	n/a	n/a	1853	1.42	2624.62	97.2	0%	97.2
Play Surface to Grass	Subsoil Excavate	Cut subsoil to proposed subgrade	Ex-17in	Pro-6in	1853	varies	0.00	0.0	0%	0.0
Play Surface to Grass	Subsoil Place	Fill subsoil to proposed subgrade	Ex-17in	Pro-6in	1853	varies	-1535.43	-56.9	0%	-56.9
Play Surface to Grass	Topsoil Place	Place 6in topsoil	n/a	n/a	1853	-0.50	-926.34	-34.3	0%	-34.3
Play Surface to Play Surface	Play Surface Excavate	Remove existing play surface, estimated depth 17in	n/a	n/a	3188	1.42	4526.44	167.6	0%	167.6
Play Surface to Play Surface	Subsoil Excavate	Cut subsoil to proposed subgrade	Ex-17in	Pro-8in	3188	varies	0.00	0.0	0%	0.0
Play Surface to Play Surface	Subsoil Place	Fill subsoil to proposed subgrade	Ex-17in	Pro-8in	3188	varies	-2622.79	-97.1	0%	-97.1
Play Surface to Wall	Play Surface Place	Place 4in PIP play surface and 4" gravel	n/a	n/a	3188	-0.67	-2135.72	-79.1	0%	-79.1
Wall to Play Surface	Wall Excavate	Remove estimated 24in timber gravel base	n/a	n/a	26	2.00	52	1.9	0%	1.9
Wall to Play Surface	Gravel Excavate	Remove estimated 12in clean gravel base	n/a	n/a	26	1.00	26	1.0	0%	1.0
Wall to Play Surface	Subsoil Excavate	Cut subsoil to proposed subgrade	Ex-24in	Pro-8in	26	varies	0	0.0	0%	0.0
Wall to Play Surface	Subsoil Place	Fill subsoil to proposed subgrade	Ex-24in	Pro-8in	26	varies	-15	-0.6	0%	-0.6
Wall to Play Surface	Gravel (for Playsurface) Place	Place 4in gravel base	n/a	n/a	26	-0.33	-9	-0.3	0%	-0.3
Wall to Play Surface	Playsurface Place	Place 4in PIP playsurface	n/a	n/a	26	-0.33	-9	-0.3	0%	-0.3

Elver Park Playground - Earthwork Quantities

City of Madison, WI Public Works Contract #8151
Date Revised: 5/8/2018

Derived from more detailed spreadsheet available from Parks Div

Computation Summary

Positive volumes are cuts (material available), negative volumes are fills (m)

Row Labels	Sum of Unfactored volume (cu yd)
Asphalt Place	-17.3
Gravel (for Pavement) Place	-15.5
Play Surface Excavate	273.0
Play Surface Place	-188.1
Subsoil Excavate	2381.0
Subsoil Place	-282.5
Topsoil Excavate	261.4
Topsoil Place	-185.8
Concrete Place	-15.4
Gravel (for Playsurface) Place	-4.6
Gravel (Path) Place	-49.9
Gravel (for concrete edge) Place	-27.2
Grand Total	2129.3

Bid Item	Quantity	Units	Relation to Table Above
20101 Excavation Cut	2642	CY	= Subsoil Excavate + Topsoil Excavate
20103 Excavation Cut - Pea Gravel / Rubber Mix	89	CY	= Play Surface Excavate
20202 Fill Borrow	67	CY	= Subsoil Excavate + Subsoil Place
20221 Topsoil	1113	SY	= (Topsoil Place)-.167
40102 Crushed Aggregate Base Course Gradation No. 2 & 3	194	tons	=(Gravel for Pavement Place + Gravel for Playsurface Place + Gravel for Concrete Edge Place) * -2 ton/cubic yard
40201 3" Depth HMA Pavement 4 LTS8-28S	37.3	tons	= Asphalt Place * -2.16 ton/cubic yard

City of Madison
Department of Public Works
PARKS DIVISION

City-County Building, Suite 104
210 Martin Luther King, Jr. Blvd.
Madison, WI 53703



PROJECT:

*ELVER PARK
INCLUSIVE
PLAYGROUND*

*ELVER PARK
1250 MCKENNA BLVD
MADISON, WI 53719*

Although every effort has been made in preparing these plans and checking them for accuracy, the contractor and subcontractors must check all details and dimensions of their trade and be responsible for the same.

ITEM DATE
Drawn by: KK 05-10-2018
Approved by: xx-xx-xxxx

PUBLIC WORKS PROJECT #:
8228

SHEET TITLE:
**DESIGN
COMPUTATIONS**

SHEET NUMBER:
1.6

PROJECT:
**2018 ELVER
 PARK INCLUSIVE
 PLAYGROUND**

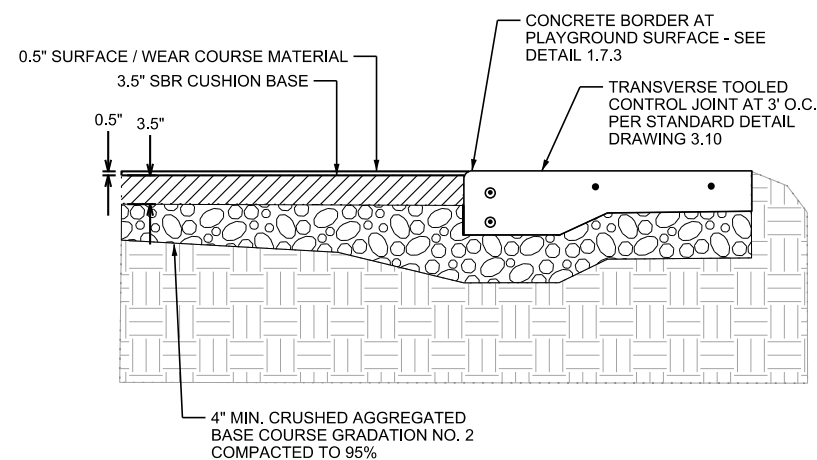
Although every effort has been made in preparing these plans and checking them for accuracy, the contractor and subcontractors must check all details and dimensions of their trade and be responsible for the same.

ITEM	DATE
Drawn by: KK	04-19-2018

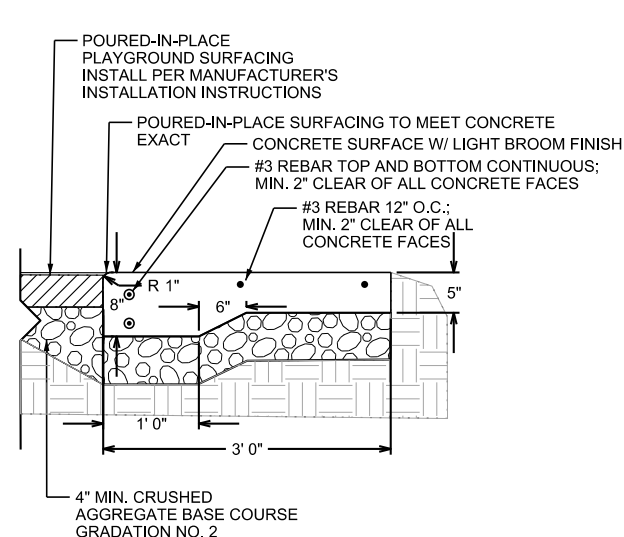
PUBLIC WORKS PROJECT #:
8228

SHEET TITLE:
**DETAILS -
 WALL AND
 SURFACING**

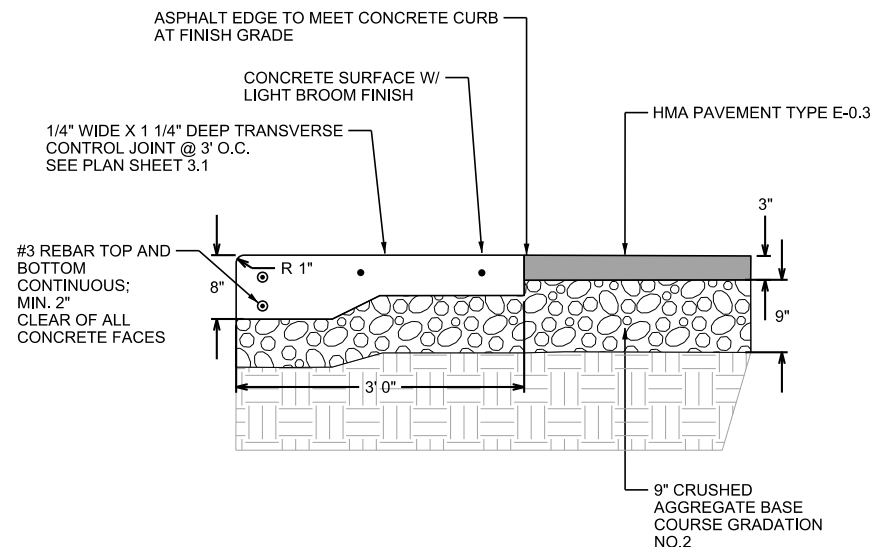
SHEET NUMBER:
1.7



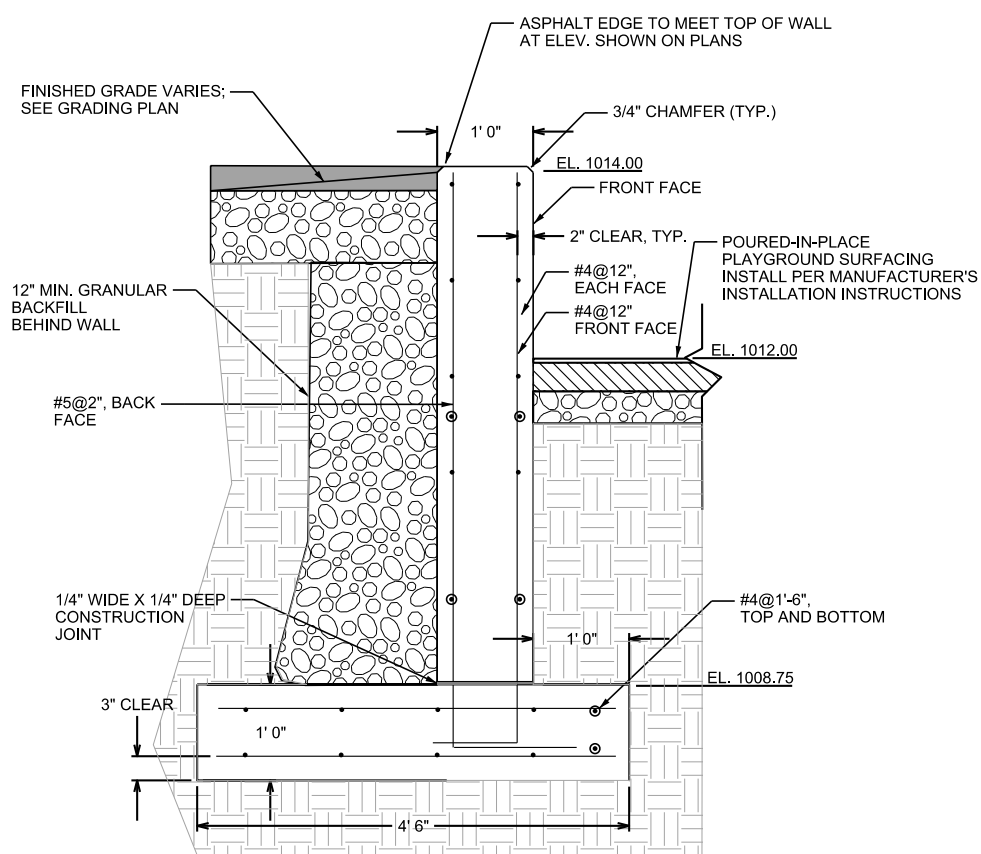
1 POURED IN PLACE PLAYGROUND SURFACING



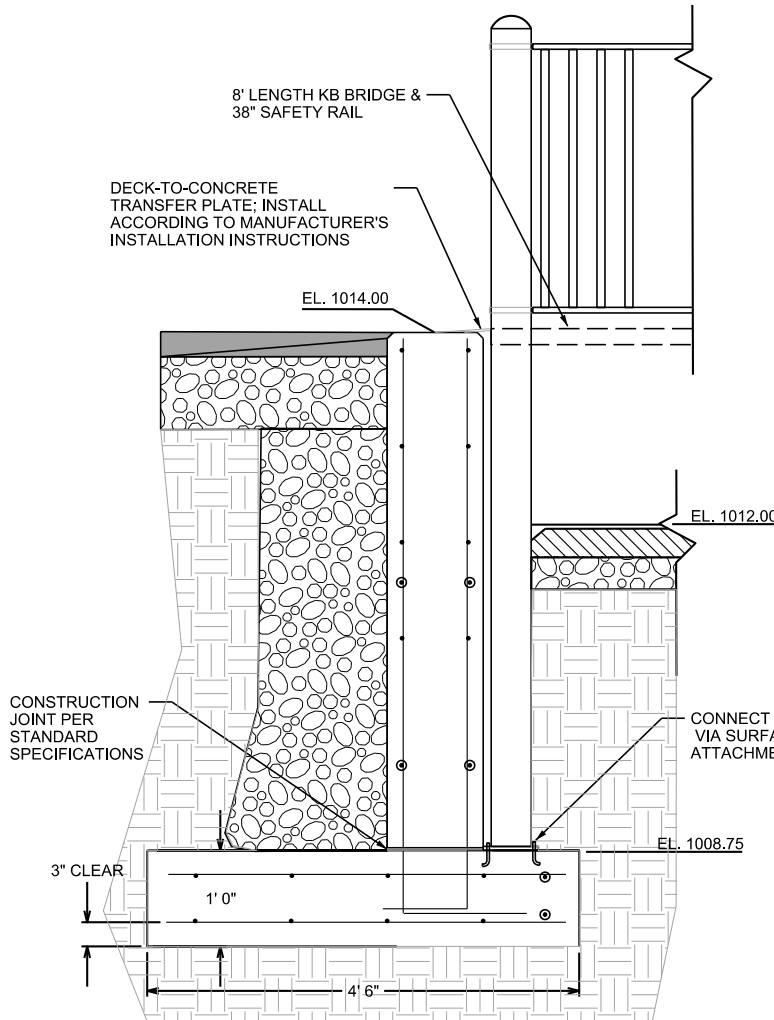
2 PAVEMENT EDGE AT PLAYGROUND SURFACE



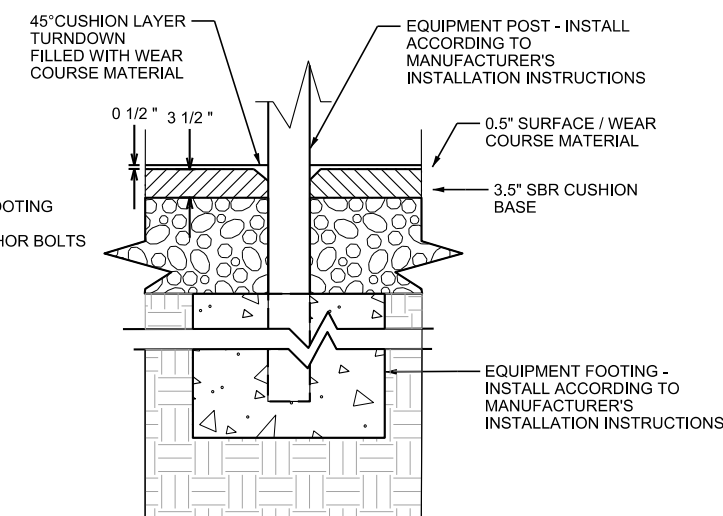
3 CONCRETE BORDER AT PLAYGROUND SURFACE



4 CONCRETE RETAINING WALL



5 CONCRETE RETAINING WALL



6 EQUIPMENT POST AT PLAYGROUND SURFACE

PROJECT:
*2018 ELVER
 PARK INCLUSIVE
 PLAYGROUND*

Although every effort has been made in preparing these plans and checking them for accuracy, the contractor and subcontractors must check all details and dimensions of their trade and be responsible for the same.

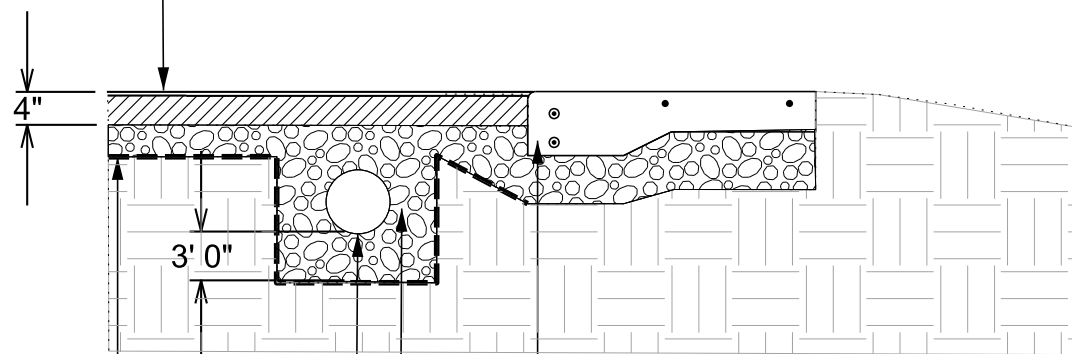
ITEM	DATE
Drawn by: KK	04-19-2018

PUBLIC WORKS PROJECT #:
8228

SHEET TITLE:
*POURED-IN-PLACE
 PLAYGROUND SURFACING
 WITH UNDERDRAIN*

SHEET NUMBER:
1.8

POURED-IN-PLACE PLAYGROUND SURFACING; INSTALL PER MANUFACTURER'S INSTALLATION INSTRUCTIONS



GEOTEXTILE FABRIC TYPE SAS NON WOVEN (MIN. 4 OZ/SY)

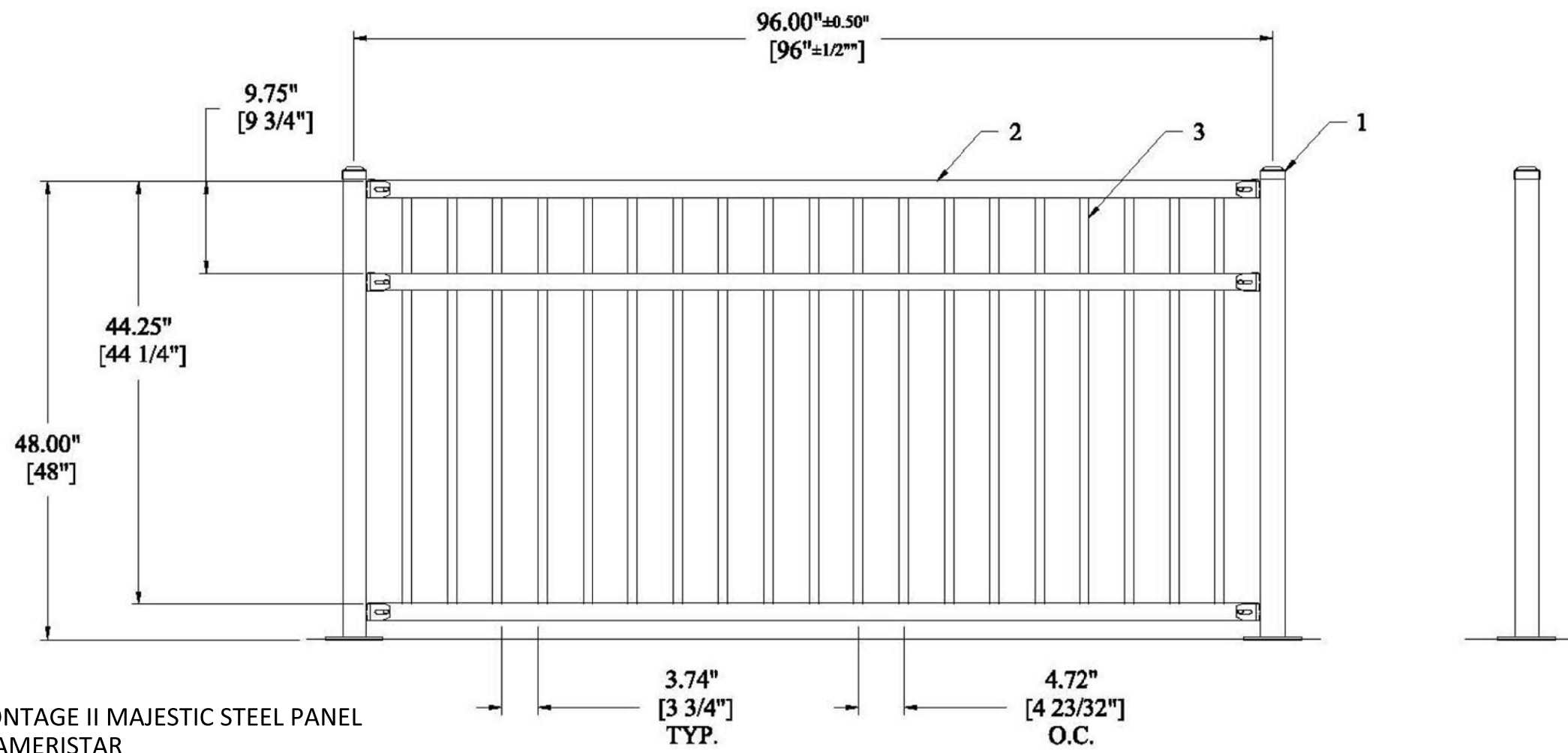
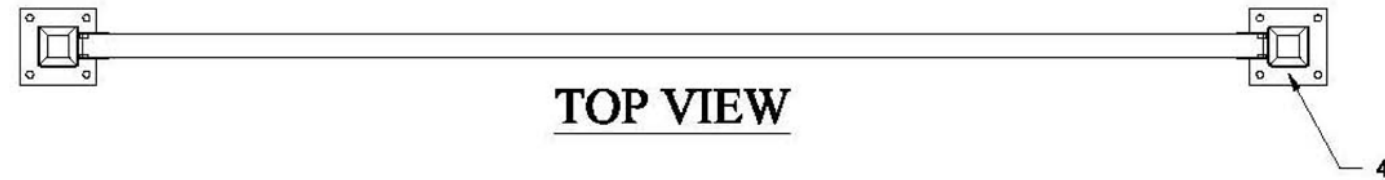
4 INCH PERFORATED PVC DRAIN PIPE WITH 'SOCK'
 PITCHED MINIMUM OF 0.5% SLOPE

OPEN GRADED BASE COURSE WI DOT GRADATION
 NO. 2 AS SPECIFIED IN SECTION 501.2.5.4.4 OF WI
 DOT STANDARD SPECIFICATIONS

PROPOSED CONCRETE BORDER
 SEE DETAIL 2, SHEET 1.7

DESCRIPTION:

1. 2 1/2 SQ. POST
2. 1 3/4" SQ. X 12 GA. CHANNEL RAIL
3. 1" SQ. X 14GA. PICKET
4. BASE PLATE
BX301 BRACKET



NOTE:
 PRODUCT SHOWN IS MONTAGE II MAJESTIC STEEL PANEL
 AS MANUFACTURED BY AMERISTAR
 1555 N. MINGO
 TULSA, OK 74116
 WWW.AMERISTARFENCE.COM

City of Madison
 Department of Public Works
PARKS DIVISION

City-County Building, Suite 104
 210 Martin Luther King, Jr. Blvd.
 Madison, WI 53703-2987

play
**MADISON
 PARKS**

PROJECT:

*2018 ELVER
 PARK INCLUSIVE
 PLAYGROUND*

Although every effort has been made in preparing these plans and checking them for accuracy, the contractor and subcontractors must check all details and dimensions of their trade and be responsible for the same.

ITEM	DATE
Drawn by: KK	04-19-2018

PUBLIC WORKS PROJECT #:
8228

SHEET TITLE:
**ORNAMENTAL
 FENCE**

SHEET NUMBER:
1.9